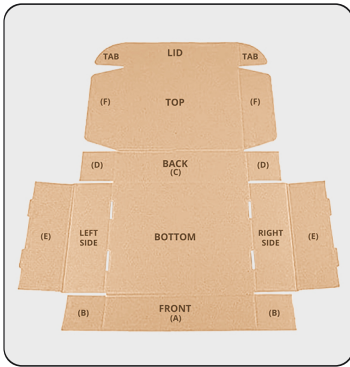
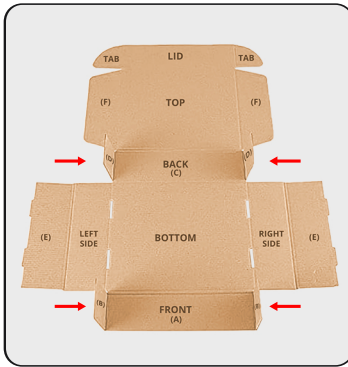


Mailer Boxes

Setup instructions



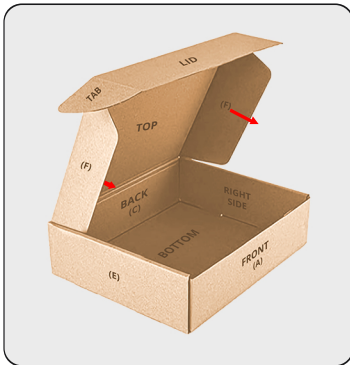
Step 1 - Identifying the inner and outer sides of the box, lay the carton on a tabletop or flat surface with the inner side facing up.



Step 2 - Folding along the creases, turn the smaller tabs both (B) & (D) and the Front side (A) and Back side (C) straight upwards.



Step 3 - Fold the both (E) flaps of the box inwards along the creases and slide the smaller tabs into the grooves at (B) & (D) on both sides respectively, to secure them tightly.



Step 4 - Fold both the (F) sides inwards, bringing the lid downwards.



Step 5 - Slide the both tabs into the gaps at left and right edges of the carton.



Step 6 - Lock the tabs into the slots to finish.